

# C.A 7028

Wire Mapper™ Pro  
LAN Tester



## Test your cables and wiring Identify and locate faults

Detection, location and identification of faults up to 150 metres away

Designed for use on UTP, STP, FTP and SSTP cables equipped with RJ45 connectors and wired in compliance with the specifications of the TIA568A/B, USOC or ISDN standards

Backlit graphical LCD screen

Compact instrument: simpler to transport and to use



Measure up



# C.A 7028 LAN TESTER

**THE C.A 7028 WIRE MAPPER™** is professional wiring tester capable of identifying faults on data a voice networks, as well as on the copper multipair cables installed. Equipped with a comprehensive range of functions, it is designed for all communication engineers and technicians and for the teams responsible for detecting faults in the communications field.

**THE C.A 7028 WIRE MAPPER™** is also a useful tool for IT managers and administrators when they need to locate faults or upgrade an existing network installation.

## Wiring subject to multiple international standards

The **C.A 7028 Wire Mapper™** measures the length of the cable before or after installation and identifies all the common faults on the horizontal cabling installed in compliance with the TIA568 A/B, USOC and ISDN standards : pairs which are cut, short-circuited, crossed, separated or reversed, as well as shielding / screen continuity.

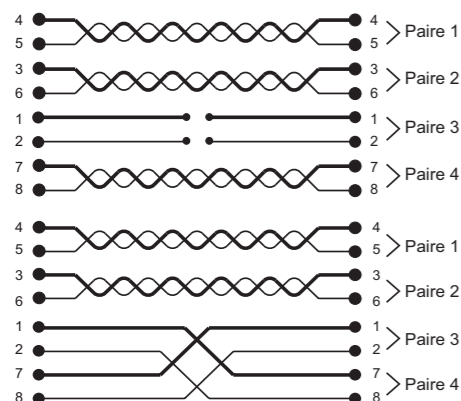
Here, the C.A 7028 Wire Mapper™ is being used on a distribution switchboard to locate the cable serving an office tens of metres away.



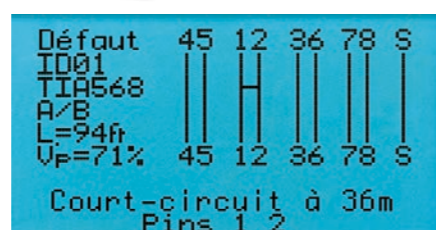
## Cutting-edge technology

The **C.A 7028 Wire Mapper™** includes a unique function called EDT™ (End Discrimination Technology).

This function considerably reduces installation commissioning costs because the wiring diagram shown on the screen clearly indicates the type and position of the fault detected.



Examples of diagrams identifying cut and cross pairs in cables



The instrument identifies all the cable faults and their lengths clearly and precisely. "ID01" specifies that the cable terminated by identifier no. 1 has a short-circuit on pair (pin) 1-2

## Testing an entire network with a single instrument

The remote identifier functions of the **C.A 7028 Wire Mapper™** are active and indicate to the remote operator when the test has ended and whether it has succeeded or failed. The instrument is delivered with an identifier bearing the number 1.

If additional identifiers are used (marked 2 to 9), the **C.A 7028 Wire Mapper™** can test and identify up to 9 links from the distribution switchboard.

## Safety first

Before checking a wiring network which is already installed, the **C.A 7028 Wire Mapper™** will alert the operator if telephone services are active on the cable tested (10 Mb/s, 100 Mb/s, Token Ring, etc.).

If additional identifiers are used (marked 2 to 9), the **C.A 7028 Wire Mapper™** can test and identify up to 9 links from the distribution switchboard.

## A rugged, practical instrument

To meet the strictest requirements for outdoor use, the instrument is integrated in a rugged, reinforced casing made of ABS flame-retardant plastic.

With its IP54 waterproofing and dustproofing, it is designed and manufactured to comply with the international quality standards. In addition, its compact size makes it practical to carry and use.

## Battery charge indication

When powered up, the **C.A 7028 Wire Mapper™** automatically displays the remaining battery capacity.

This indication enables the operator to make sure that the instrument's battery has sufficient capacity before starting long-duration tests. The instrument also switches automatically to standby after 3 minutes' without any activity, once again to save battery capacity.

The C.A 7028 Wire Mapper™ can also be used to check whether there are any faults on cables already installed.

# C.A 7028 LAN wiring tester

## MEASUREMENTS

Range	150 metres
Accuracy	± 5%
Cable types	UTP, STP, FTP & SSTP
Faults indicated	Short-circuited pair, wire in open circuit, short-circuit between pairs, crossed / split pairs, inverted pairs, screening continuity
Location of faults	Near extremity, remote extremity or distance if the fault is between the two
Wiring modes	TIA 568A/B, USOC & ISDN
Operating indications	Telephone, 10BaseT, 100Mbit+, Token Ring
Voltage warning	Warning of a voltage is present on the telecommunication network
Tone generator	Oscillating tone generator: 810 Hz - 1,110 Hz

## GENERAL

Main-unit display	Graphical liquid crystal display 128 x 64 pixels with backlighting
Display of faults	Display of all the faults and configuration data in text and graphic forms
Remote display	Green/red LED
Languages	English (US and UK), German, French, Spanish, Italian
Power supply	4 x 1.5 V AA alkaline batteries
Battery life	Standby mode > 4,000 hours Continuous testing > 7.5 hours
Automatic power-off	After 3 minutes
Load level indicator	0 to 100 % in bargraph form
Storage temperature	-20 to 70°C (-4 to 158°F) 5 to 95 % relative humidity without condensation
Operating temperature	0 à 40°C (32 à 112°F) 5 à 95 % d'humidité relative sans condensation
Dimensions	Main unit: 165 x 90 x 37 mm (6.5 x 3.5 x 1.5") Remote unit: 65 x 52 x 25 mm (2.5 x 2.0 x 1.0")
Weight	Main unit: 350 g (12 oz) Remote unit: 40 g (1.5 oz)
Standards	EN 61010-1, EN 61326-1, EN 61000-4-2, EN 61000-4-3, EN 61000-4-4, EN 61000-4-6
State at delivery	Product delivered with 2 x RJ 45 cables, 1 identifier, 1 soft case, battery and user manuals in 5 languages (FR, GB, DE, ES, IT)

## References to order

C.A 7028 Wire Mapper™ Pro LAN tester ..... P01129501



## Accessories

Set of identifiers nos. 2 to 5 for C.A 7028 ..... P01101994

Set of identifiers nos. 6 to 9 for C.A 7028 ..... P01101995



Bag ..... P01298532



**FRANCE**  
Chauvin Arnoux  
190, rue Championnet  
75876 PARIS Cedex 18  
Tel: +33 1 44 85 44 38  
Fax: +33 1 46 27 95 59  
export@chauvin-arnoux.fr  
www.chauvin-arnoux.com

**UNITED KINGDOM**  
Chauvin Arnoux LTD  
Unit 1 Nelson Ct, Flagship Sq, Shaw Cross Business Pk  
Dewsbury, West Yorkshire - WF12 7TH  
Tel: +44 1924 460 494  
Fax: +44 1924 455 328  
info@chauvin-arnoux.co.uk  
www.chauvin-arnoux.com

**MIDDLE EAST**  
Chauvin Arnoux Middle East  
P.O. BOX 60-154  
1241 2020 JAL EL DIB - LEBANON  
Tel: +961 1 890 425  
Fax: +961 1 890 424  
camie@chauvin-arnoux.com  
www.chauvin-arnoux.com